



Damping rings DT (DBGM) and DTV

The damping ring DT serves for structure-borne noise separation between the drive units (motor-bellhousing-pump) and tank cover or base plate, respectively.

Table of Contents

1 Technical Data

2 Hints

- 2.1 General Hints
- 2.2 Safety and Advice Hints
- 2.3 General Hints to Danger
- 2.4 Proper Use

3 Storage

4 Assembly

- 4.1 Assembly of the Damping Ring DT with Tank or Base Plate
- 4.2 Assembly of the Damping Ring DT with Bellhousing
- 4.3 Further Details
- 4.4 Spares Inventory, Customer Service Addresses



1 Technical Data

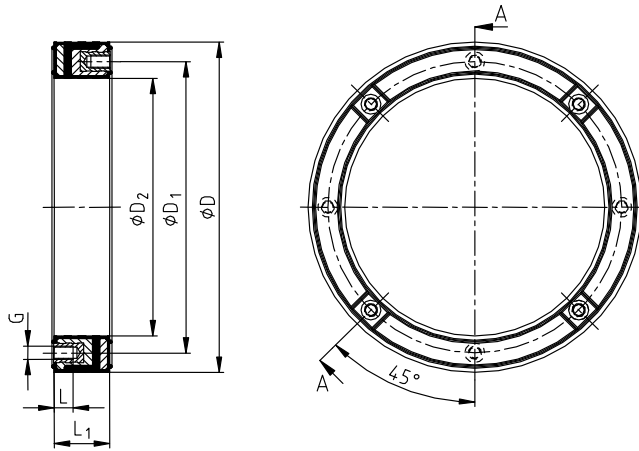


Illustration 1: damping ring DT

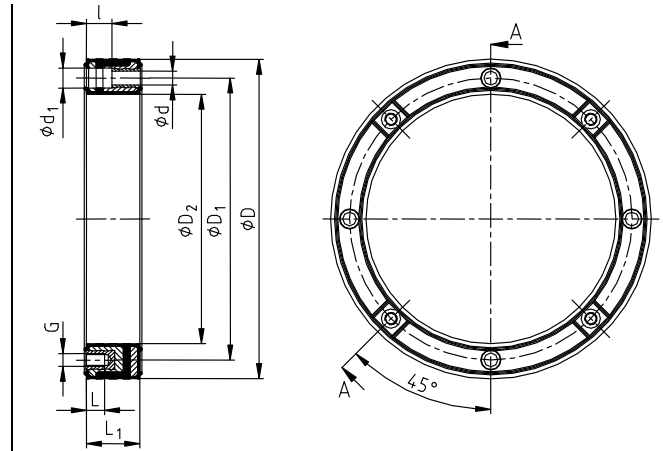


Illustration 2: damping ring DT.../2

Table 1: Dimensions

IEC motor size	Damping ring size	Dimensions [mm]									T _A [Nm]
		D	D ₁	D ₂	z x G	L	L ₁	z x Ød	z x Ød ₁	l	
71	DTV 160	160	130	111,0	4 x M8	16,5	35	4 x 9	4 x 14,5	18	12
80	DT 200	200	165	145,2	4 x M10	20,0	40	4 x 11	4 x 17,5	20	23
90 S											
90 L											
100 L	DT 250	250	215	191	4 x M12	17,5	45	4 x 13	4 x 19,5	22	40
112 M											
132 S	DT 300	300	265	235	4 x M12	17,5	50	4 x 13	4 x 19	24	40
132 M											
160 M											
160 L	DT 350	350	300	261	4 x M16	31,0	60	4 x 17	4 x 25	26	100
180 M											
180 L											
200 L	DT 400	400	350	301	4 x M16	31,0	70	4 x 17	4 x 25	31	100
225 S	DT 450	450	400	351	8 x M16	31,0	80	8 x 17	8 x 25	41	100
225 M											
250 M	DT 550 DTV 550	550	500	451	8 x M16	30,0	68	8 x 17	8 x 25	23	210
280 S											
280 M											
315 S	DT 660 DTV 660	660	600	551	8 x M20	30,0	68	8 x 22	8 x 33	23	410
315 M											



2 Hints

2.1 General Hints

Please read through these mounting instructions carefully before you set the damping ring into operation. Please pay special attention to the safety instructions!
The mounting instructions are part of your product. Please keep them carefully and close to the damping ring. The copyright for these mounting instructions remains with **KTR Kupplungstechnik GmbH**.

2.2 Safety and Advice Hints



DANGER!

Danger of injury to persons.



CAUTION!

Damages on the machine possible.



ATTENTION!

Pointing to important items.

2.3 General Hints of Danger



DANGER!

With assembly and maintenance of the damping ring it has to be made sure that the entire drive train is protected against unintentional engagement and the machine is depressurized. Improper treatment of the damping ring and rotating parts may cause serious injuries. Please make absolutely sure to read through and observe the following safety instructions.

- All operations with the damping ring have to be performed taking into account "safety first".
- Protect the power pack against unintentional engagement, e. g. by providing hints at the place of engagement or removing the fuse for current supply.
- Do not touch the operation area of the machine as long as it is in operation.
- Protect the rotating parts from accidental contact. Please provide for the necessary protection devices and caps.

2.4 Proper Use

You may only assemble and maintain the damping ring if you

- carefully read through the mounting instructions and understood them
- had technical training
- are authorized to do so by your company

The damping ring may only be used in accordance with the technical data (see chapter 1). Unauthorized modifications on the damping ring design are not admissible. We do not take any warranty for resulting damages. To further develop the product we reserve the right for technical modifications.

The **damping ring** described in here corresponds to the technical status at the time of printing of these mounting instructions.

Please note protection mark ISO 16016.	Drawn: 18.04.13 Pz/Wy	Replaced for: KTR-N 41024
	Verified: 26.04.13 Pz	Replaced by:



3 Storage

The features of the damping ring remain unchanged for up to 5 years in case of favourable stock conditions.

4 Assembly

The damping ring is generally supplied ready for assembly.

4.1 Assembly of the Damping Ring DT with Tank or Base Plate

Damping ring DT (see illustration 1)

- The damping ring DT is placed on the hole in the tank or base plate, respectively.
- Push the screws through the tank or base plate and screw to the threads in the damping ring DT (see illustration 3).
- The screw lengths have to be selected such that the overall length of the thread in the damping ring DT is fully utilized, if possible. For tightening torques T_A see table 1.

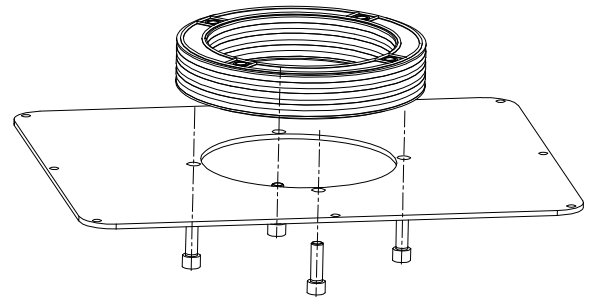


Illustration 3: assembly of the damping ring DT



ATTENTION!

Secure the screw connection additionally against self-loosening, e. g. glueing with Loctite (medium-tight).

Damping ring DT.../2 (see illustration 2)

- The damping ring DT.../2 is placed on the hole in the tank or base plate, respectively.
- Push the screws through the counterbores in the damping ring and screw to the threads in the tank or base plate (see illustration 4).
- The screw lengths have to be selected such that the overall length of the thread in the tank or base plate is fully utilized. For tightening torques T_A see table 1.

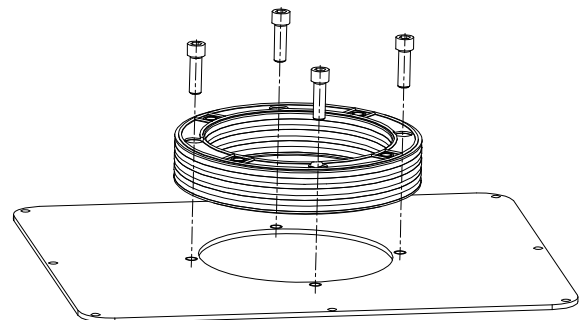


Illustration 4: assembly of the damping ring DT.../2



ATTENTION!

Secure the screw connection additionally against self-loosening, e. g. glueing with Loctite (medium-tight).



4 Assembly

4.2 Assembly of the Damping Ring DT with Bellhousing

- The bellhousing is pushed through the damping ring DT up to the contact surface.
- Push the screws through the bores in the collar of the bellhousing and screw to the threads in the damping ring DT (see illustration 5).
- The screw lengths have to be selected such that the overall length of the thread in the damping ring DT is fully utilized. For tightening torques T_A see table 1.

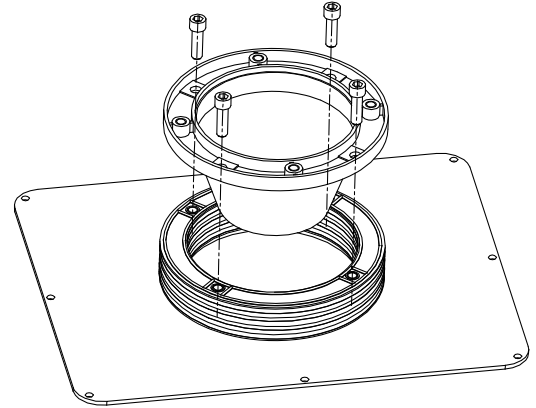


Illustration 5: assembly of the damping ring DT with bellhousing



ATTENTION!

Secure the screw connection additionally against self-loosening, e. g. glueing with Loctite (medium-tight).

4.3 Further Details

- The damping ring DT can be used both horizontally and vertically.
- The damping ring DTV is intended for vertical use only.
- Sealing lips are moulded on the damping ring DT so that additional seals between bellhousing and tank can be done without. The sealing lips must be inspected for potential damages before assembly.

Please observe the following KTR mounting instructions:

- Mounting instruction for damping ring → KTR-N 41030

4.4 Spares Inventory, Customer Service Addresses

Contact addresses of the KTR partners for spare parts and orders can be obtained from the KTR homepage at www.ktr.com.



ATTENTION!

KTR does not assume any liabilities or guarantees regarding the use of spare parts and accessories which are not provided by KTR and for the damages resulting herefrom.

Please note protection mark ISO 16016.	Drawn:	18.04.13 Pz/Wy	Replaced for:	KTR-N 41024
	Verified:	26.04.13 Pz	Replaced by:	